

BREWERY DISTRICT OFFICE, WAREHOUSE & FLEX

2320 Commerce St
Tacoma, WA 98402

FOR LEASE



Fully Built Out Office, Warehouse, Retail & Flex Space

PRICE/MO*	\$21,000 + NNN
BUILDING SF	~21,000
WAREHOUSE SF	~6,811
OFFICE/FLEX SF	~14,189
ZONING	WR (WH / Residential)
PARCEL #	2023040030

Well located in Brewery District

Flex Office, Warehouse, Retail Space

Renovated Office

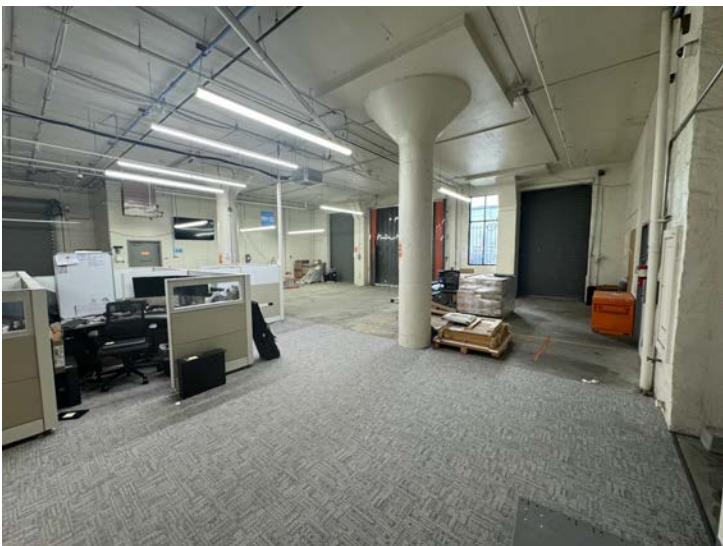
3 DH Door

Easy access to I-705 & I-5

Close to UW Tacoma & Brewery Blocks

Heavy power 400A, 3-Phase, 480v

2320 Commerce St



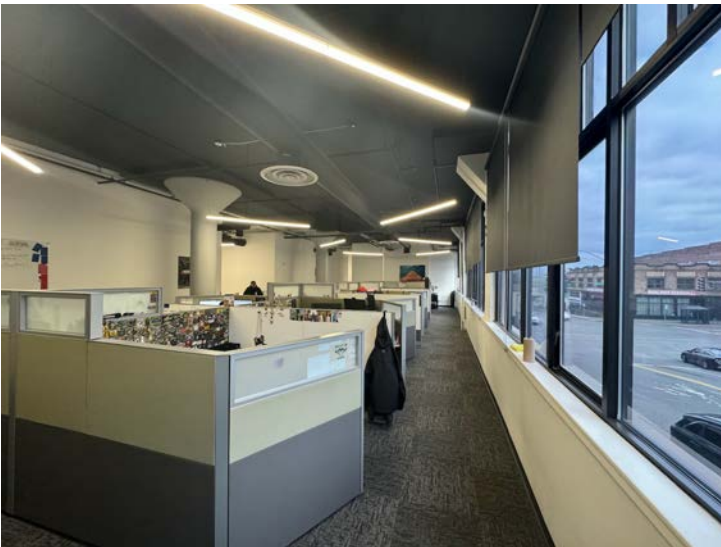
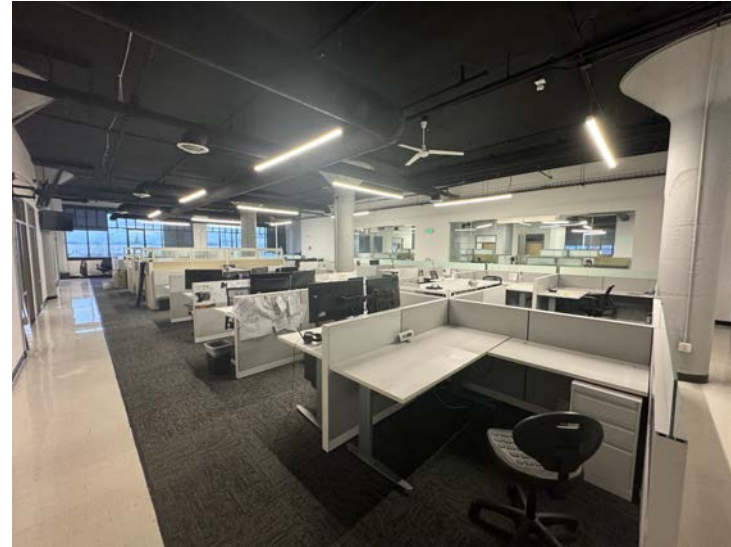
Clover Capital
Commercial Real Estate

Neal Mulnick
neal@clover.capital

Michele Mulnick
michele@clover.capital

425-746-1500 | VisitClover.com

2320 Commerce St



Clover Capital
Commercial Real Estate

Neal Mulnick
neal@clover.capital
425-746-1500

Michele Mulnick
michele@clover.capital
VisitClover.com

2320 Commerce St

